

44/201

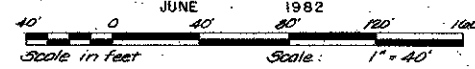
CYPRESS POINT PATIO HOMES - PHASE IIA BOCA WEST - P.U.D.

IN PART OF SECTION 15, TWP. 47 S., RGE. 42 E.

PALM BEACH COUNTY, FLORIDA

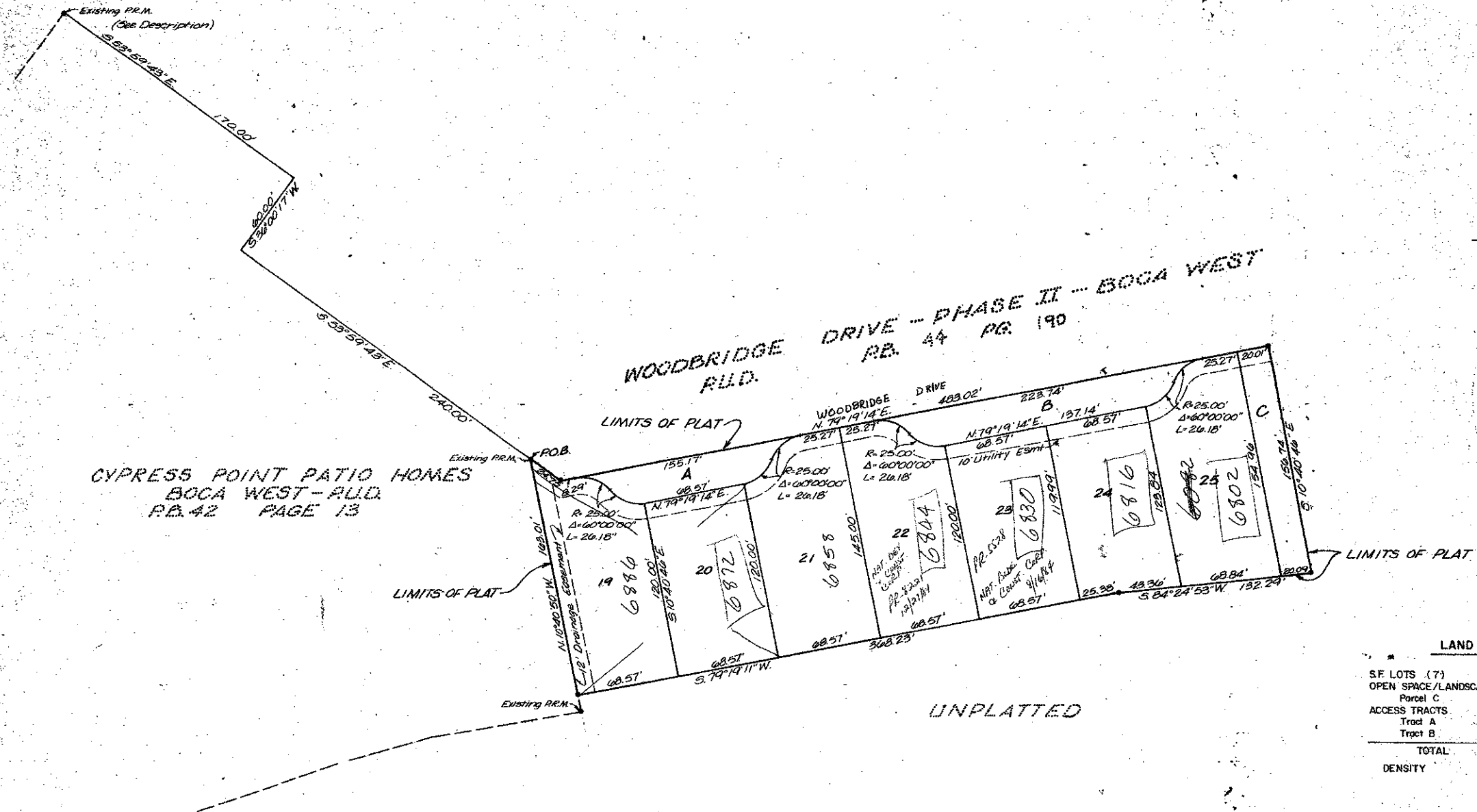
IN 2 SHEETS SHEET NO. 2

GEE & JENSON
ENGINEERS, ARCHITECTS, PLANNERS, INC.
WEST PALM BEACH, FLORIDA



201

STATE OF FLORIDA
COUNTY OF PALM BEACH
This Plat was filed for record on _____ day of _____ 1982
and duly recorded in Plat Book No. _____
on page _____
JOHN B. DUNKLE, Clerk Circuit Court
By: _____, D.C.



LAND USE	
S.F. LOTS (7)	1.45 Acres
OPEN SPACE/LANDSCAPING	0.07 Acres
Parcel C	0.07 Acres
ACCESS TRACTS	
Tract A	0.08 Acres
Tract B	0.10 Acres
TOTAL	1.68 Acres
DENSITY	4.17 Units/Acre

UNPLATTED

CYPRESS POINT PATIO HOMES
BOCA WEST - P.U.D.
P.B. 42 PAGE 13

WOODBIDGE DRIVE - PHASE II - BOCA WEST
P.B. 44 P.B. 190

0214-307
CYPRESS POINT PATIO HOMES IIA
BOCA WEST
44/201